



January 18, 2019

Re: Triennial Review Request for Surface Water Quality Data for Regulation #38, South Platte River Basin and for Regulation #93, 303(d) List of Impaired Waters

The Colorado Department of Public Health and Environment, Water Quality Control Division (division) is requesting surface water quality data for the triennial review of water quality classifications and standards for the South Platte River basin. This effort requires compilation of recent water quality parameters including biological, physical, chemical, and other related data. These data will be assessed by the division to develop recommendations to the Water Quality Control Commission (Commission) for maintaining or modifying water quality classifications and standards for the South Platte basin. These data will also be used in the development of the 2020 303(d) List of Impaired Waters.

The schedule for the review of WQCC Regulation 38 South Platte River Basin and subsequent rulemaking is as follows:

Regulations #38 & #93 Data Submittal and Hearing Schedule	
Submit Data to Division	April 15, 2019
Reg. #38 Issues Formulation Hearing	November 2019*
Reg. #93 Rulemaking Notice and Proposal	July/August 2019*
Reg. #93 Rulemaking Hearing	December 9, 2019
Reg. #38 Rulemaking Notice and Proposal	February, 2020*
Reg. #38 Rulemaking Hearing	June, 2020*
<i>*Dates are approximate</i>	

The division collected data in the South Platte basin in 2017 and 2018 and recognizes that other entities may have water quality data that would be appropriate to include in the data analyses for the South Platte River basin review process. A list of the division's monitoring sites is available upon request. In addition, there are numerous stream segments the division was unable to sample and data collected by other entities may fill these data gaps.

The division is requesting water quality data from sampling events conducted in the South Platte River basin during the last five years (10/1/2013 to 12/31/2018). Older data may be used on a case-by-case basis if older data is still representative or if the older data are used with newer data to determine trends. See the attached document below for river basins and hydrologic unit codes (hucs) of interest.



Data Submission Details	
Submission Deadline	April 15, 2019
Email data to	cdphe_wqcd_surfacewaterdata@state.co.us
Email subject	2019 Regulation #38
Sampling Period of Record	10/1/2013 to 12/31/2018

If files are too large for email or if you have additional questions, contact the division at the email above. Data received after the deadline will not be utilized in the Regulations #38 and #93 rule making hearings.

The data should follow the credible evidence guidelines used in the compilation of previous 303(d) lists (see below). The guidelines are:

1. Information to describe the methods used for sample collection and field or laboratory analysis.
2. Information and data to indicate that the measurement represents existing conditions.
3. For physical and biological assessments, confirmation that data was collected by an observer who has training and experience in performing such observations, and that recorded observations adequately account for seasonal variation.

The following parameters are of particular interest to the division, although other parameters or analytical techniques are welcomed:

Parameters of Interest	
• Flow Rate	• Total Ammonia (NH ₃ and NH ₄) as N
• pH	• Hardness (total as CaCO ₃)
• Water Temperature (deg C)	• Calcium
• Dissolved Oxygen	• Magnesium
• Specific Conductivity	• Total Phosphorous
• Arsenic (dissolved and total recoverable)	• Sulfate as SO ₄
• Cadmium (dissolved)	• Nitrite as N
• Chromium III and VI	• Nitrate as N
• Copper (dissolved)	• NO ₃ +NO ₂
• Iron (dissolved and total recoverable)	• Total Nitrogen as N
• Lead (dissolved)	• Kjeldahl Nitrogen as N
• Manganese (dissolved)	• <i>E. Coli</i> (per 100 ml)
• Mercury (total)	• Aquatic life data (fish, macroinvertebrates, algae, macrophytes)
• Nickel (dissolved)	• Periphyton data
• Selenium (dissolved)	• Aquatic life habitat data
• Silver (dissolved)	• Fish tissue residue data
• Zinc (dissolved)	• Organic chemicals and/or pesticides
• Uranium (dissolved and total)	• Sediment data
Additional Parameters of Interest for Lakes & Reservoirs	
• Depth profiles including pH, temperature and dissolved oxygen	
• Secchi depth	• Chlorophyll <i>a</i>

The division has defined formats for data submittals. They are available for download on the following WQCD website: <https://www.colorado.gov/cdphe/rivers-lakes-and-streams-data>. Data submissions should include the following information:

- Name and contact information of the party submitting the data;
- Location of each sample station in latitude and longitude with the associated reference datum, e.g., North American Datum 1983, etc.;
- Waterbody name and sampling location description with the date the sample was taken;
- Parameter or condition measured and the value;
- Unit of measurement;
- For non-detect or non-quantifiable data, the less than value associated with the method detection limits (MDL) or reporting limits (RL) (i.e., LQL, LRL, PQL, etc.);
- Method used to measure the pollutant;
- For continuous temperature data, submit raw data without the DM and WAT calculated.

Entities that submit data to the division to fulfill other requirements such as discharge permit generation, should resubmit the data through this data call to ensure it is used in this assessment process. Please note that the data call for the South Platte basin is separate from the data submittal required for the Nutrients Management Control Regulation (Regulation # 85).

At the direction of data owners, the Colorado Data Sharing Network (CDSN) submits data directly (no data reformatting required) to the division. If you utilize CDSN and would like CDSN to submit your data to the division for this Triennial Review, please begin working with CDSN no later than February 5, 2019. Additionally, please also inform the division and CDSN by March 1, 2019, of your intent to have CDSN submit your data along with a list of monitoring sites and the period of record for the data submission. This helps to ensure that the division plans for and receives all of your data. To learn more about how CDSN supports the division's data call and its mapping and analysis tools, go to http://www.coloradowaterdata.org/datacalls_cdsn.html.

For more information or if you have any questions, please email cdphe_wqcd_surfacewaterdata@state.co.us or call Skip Feeny at 303-691-4928 or Arne Sjodin at 303-692-3522 of the Environmental Data Unit. Information submitted to the division through this process will be available for public review after July 1.

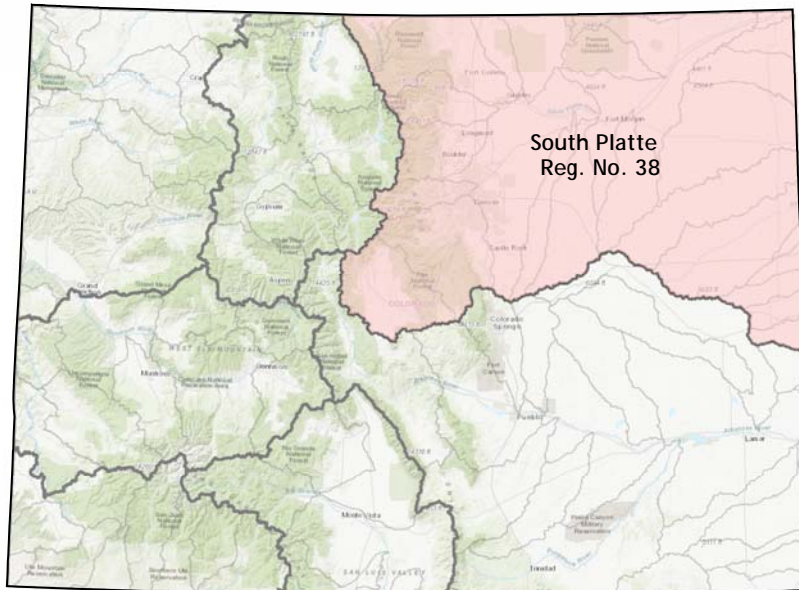
The division uses an email distribution list from the Commission's Office. Please contact the commission's office at <http://www.cdphe.state.co.us/op/wgcc/> or 303-692-3463 if you would like to be removed, or know of any individuals or organizations that should be added.

Sincerely,



Sarah Wheeler
Environmental Data Unit Manager
Water Quality Control Division

Map and HUCs of the Region Included in the WQCD 2020 Data Call



Basin	Hydrologic Unit Code	Basin	Hydrologic Unit Code
Arikaree	10250001	Middle South Platte-Sterling	10190012
Beaver	10190013	North Fork Republican	10250002
Big Thompson	10190006	North Fork Smoky Hill	10260002
Bijou	10190011	Pawnee	10190014
Cache La Poudre	10190007	Sidney Draw	10190017
Clear	10190004	Smoky Hill Headwaters	10260001
Crow	10190009	South Fork Beaver	10250012
Frenchman	10250005	South Fork Republican	10250003
Kiowa	10190010	South Platte Headwaters	10190001
Ladder	10260004	St. Vrain	10190005
Little Beaver	10250013	Stinking Water	10250006
Lone Tree-Owl	10190008	Upper Laramie	10180010
Lower Lodgepole	10190016	Upper Lodgepole	10190015
Lower South Platte	10190018	Upper South Platte	10190002
Middle South Platte-Cherry Creek	10190003		